

BLAST ROOM INSTALLATION INSTRUCTIONS
(TYPICAL INSTALLATION-ROOM DESIGN WILL VARY)

- 1) Locate steel for floor (not provided) sheets and lay flat on floor as shown (figure 35), stitch weld sheets together (figure 36).
- 2) Stand (1) back wall panel and (1) side panel together as shown (figure 32) over steel floor, square corners with steel floor and attach with self drilling screws, level top and sides of panel.
- 3) Repeat process for opposite side leaving room in back wall for other center panels.
- 4) Install center back panel or panels (figure 31) with self drilling screws, level top and sides.
- 5) Install top and bottom back angles (figure 30) with self drilling screws, level top and sides.
- 6) Install main side panels left and right or mandoor (figure 27 & 28) with self drilling screws, level panel.
- 7) Install left and right floor side supports (figure 26) attach to side panels only.
- 8) Install left and right roof and top side supports (figure 25) attach with self drilling screws.
- 9) Install rear and center roof panels (figure 23) with self drilling screws.
- 10) Square roof and side panel.
- 11) Install final side panels (left and right or mandoor) (figure 24) and attach with self drilling screws.
- 12) Install final roof panels with connector towards front as shown (figure 21) with self drilling screws, square front and sides of room.
- 13) Stand right hand door panel in place, level top and end sections and attach with cap screws and nuts (figure 17).
- 14) Stand left hand door panel in place, level top and end sections and attach with cap screws and nuts (figure 19).
- 15) Attach front panel support (figure 16) using self tapping screws on front panel and secure to existing floor with proper anchors (not provided).

- 16) Connect front corner panels at top using self tapping screws (figure 14).
- 17) Note: Be certain that front door opening is square.
- 18) Locate and mark door latch mechanism, See figure 10.
- 19) Install Rubber Door Sweeps on bottom of front doors.
- 20) Silicone seal all interior seams.

Once dust collector and media reclaim/blast machine location is decided, install blast hose and twinline connection in room. Cut room panel to size after marking access hole. Repeat process for media reclaim hose connection.

FIGURE 35

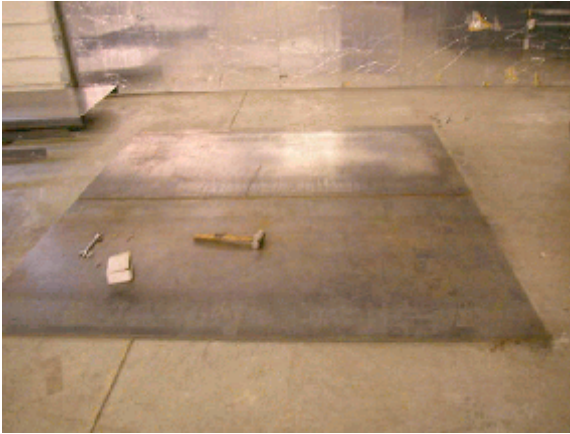


FIGURE 36



FIGURE 32



FIGURE 31



FIGURE 30



FIGURE 27



FIGURE 28



FIGURE 26



FIGURE 25



FIGURE 23



FIGURE 24



FIGURE 21



FIGURE 17



FIGURE 19

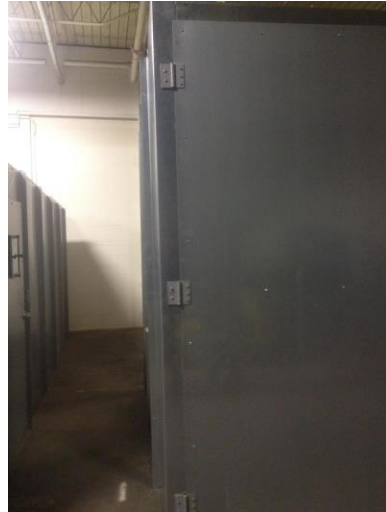


FIGURE 16



FIGURE 14



FIGURE 10



